



MR. STAR BATHING PAVILION - GENERAL DESIGN





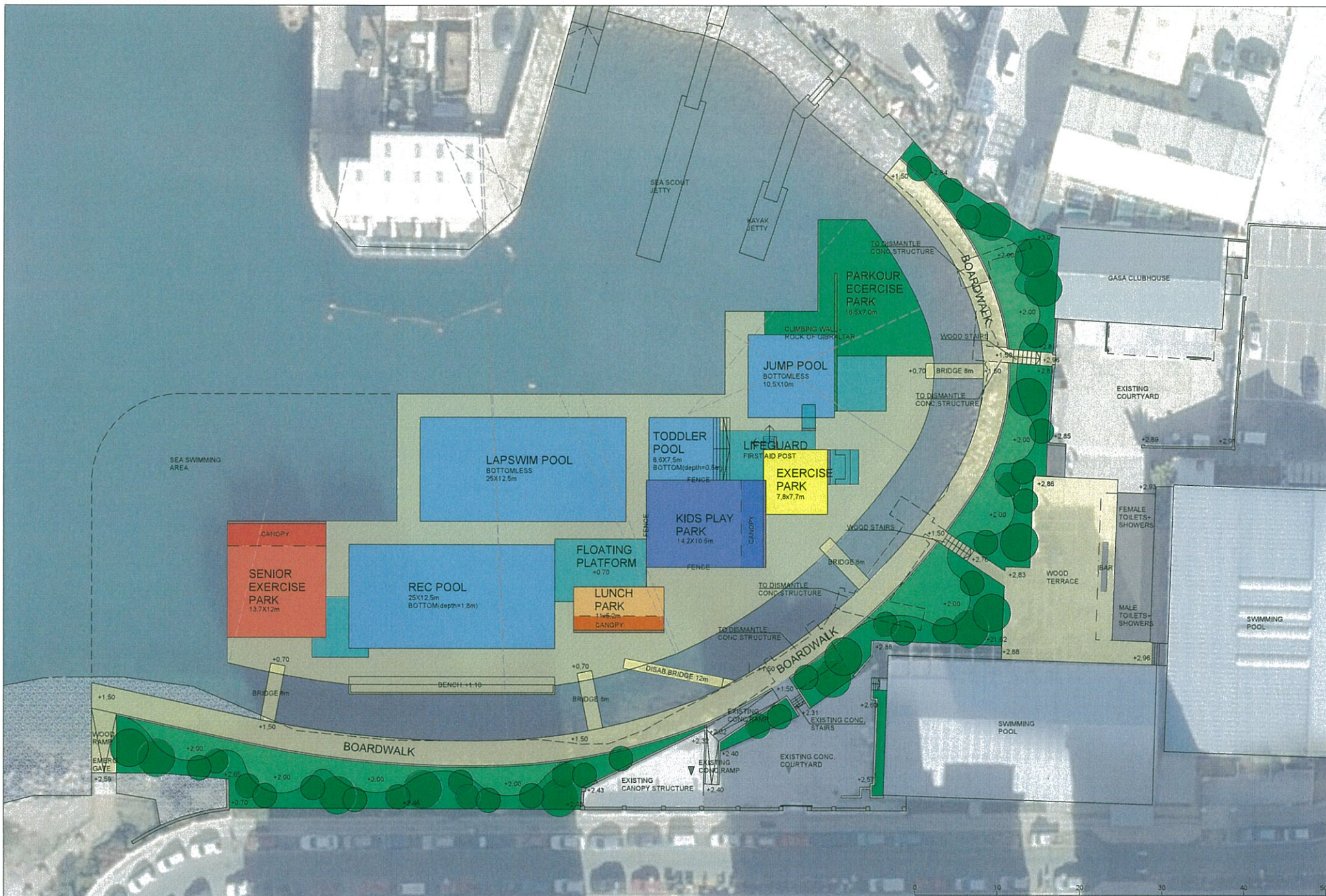
GIBRALTAR BATHING PAVILION- GENERAL DESIGN
RENDER 2 A3 - PAGE 2/14

11.10.2013

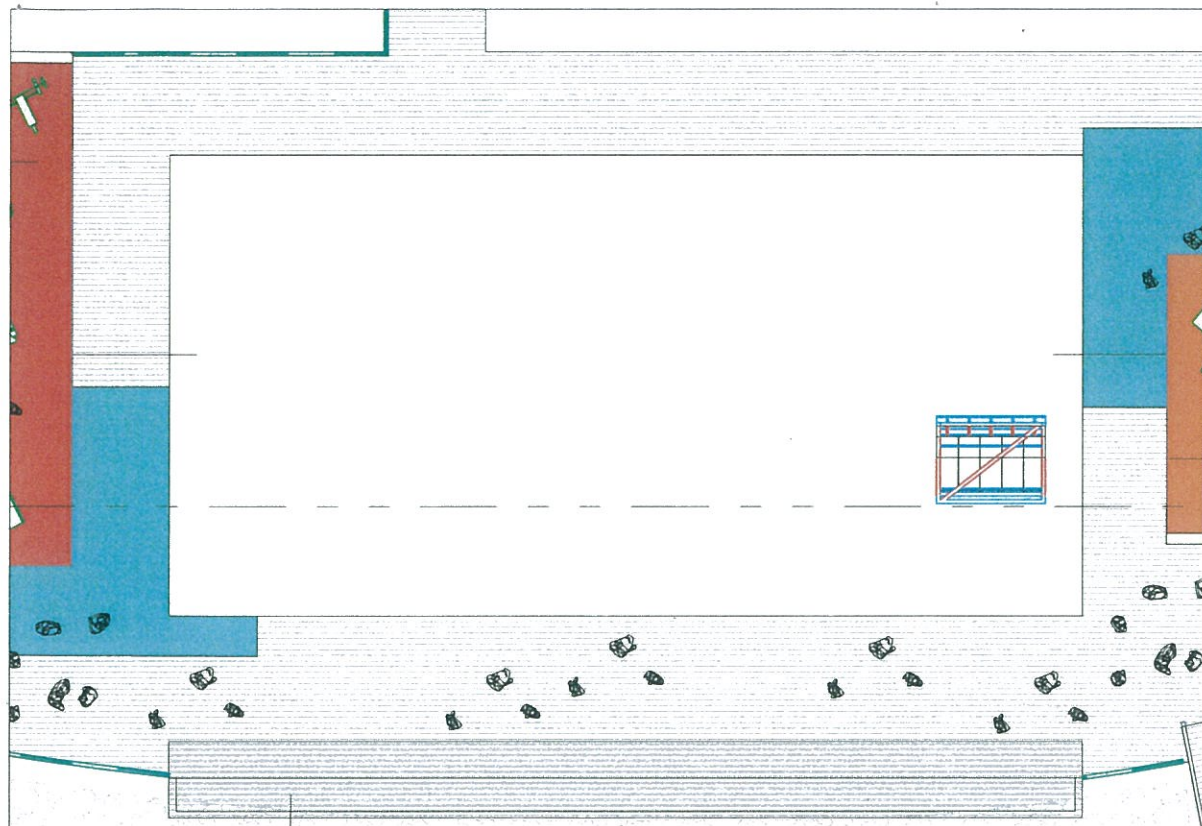
MARINETEK



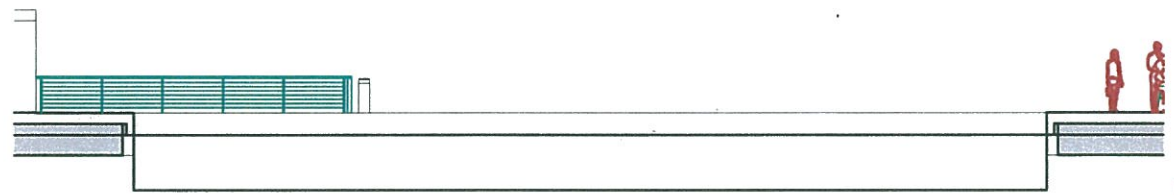




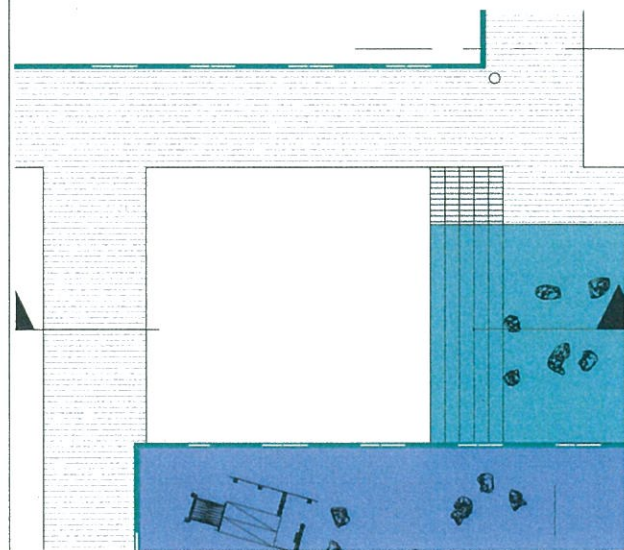
GIBRALTAR BATHING PAVILION- GENERAL DESIGN
 SITEPLAN - SCALE 1:400 A3 - PAGE 5/14



REC POOL
FLOORPLAN 1:200



REC POOL
SECTION 1:200



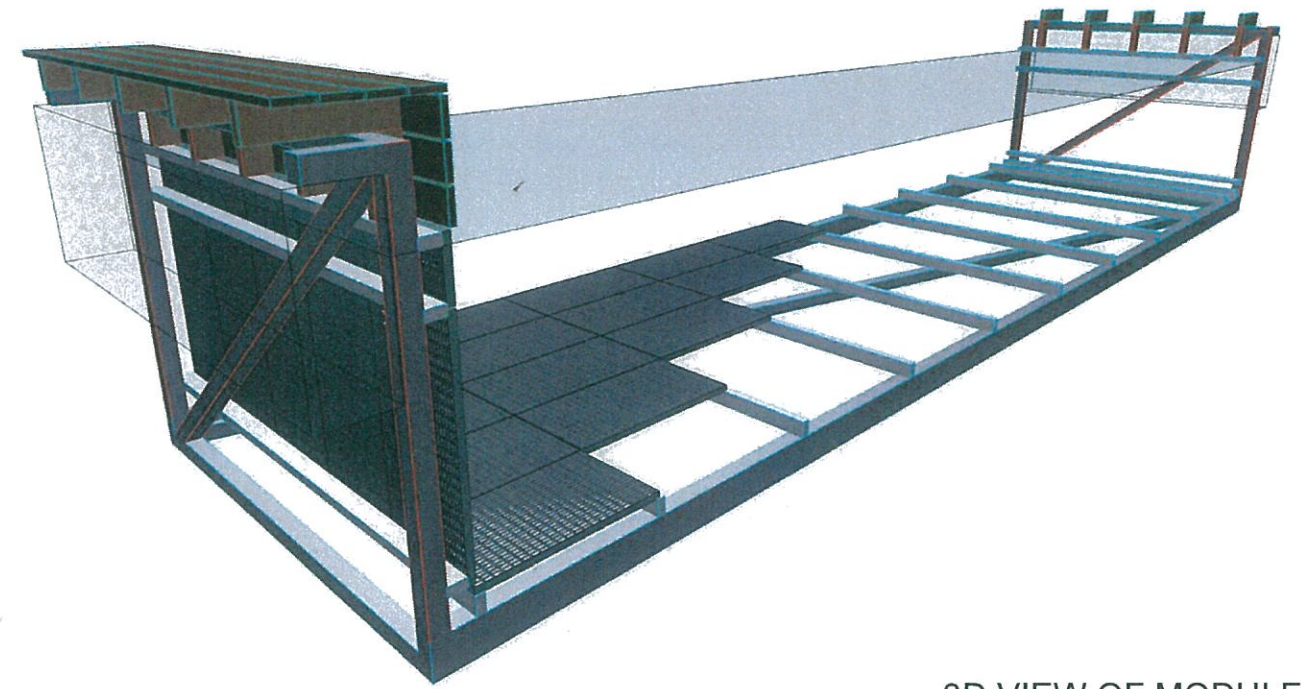
TODDLER POOL
FLOORPLAN 1:200



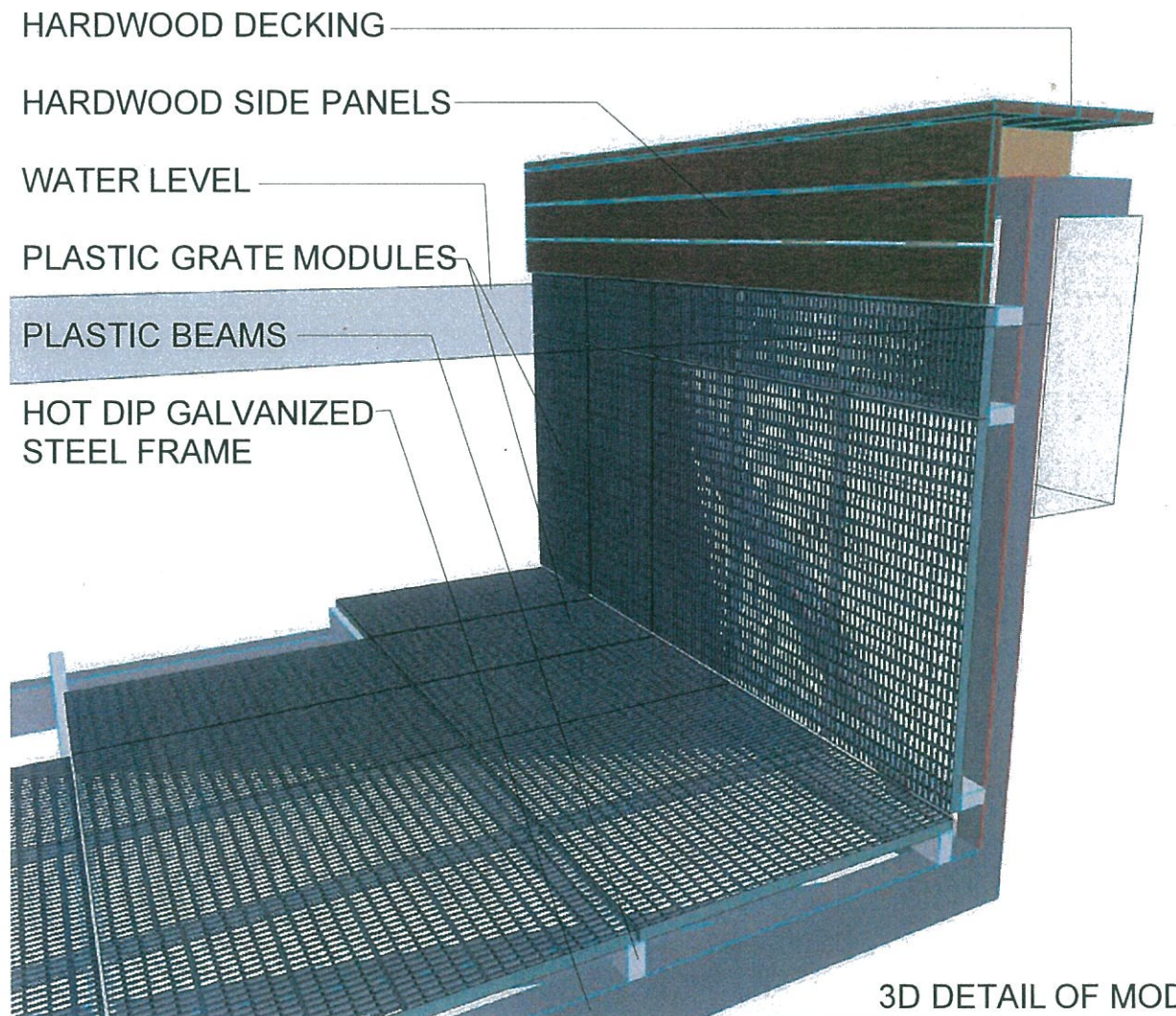
TODDLER POOL
SECTION 1:200

**Recreation/toddler
pool structure**

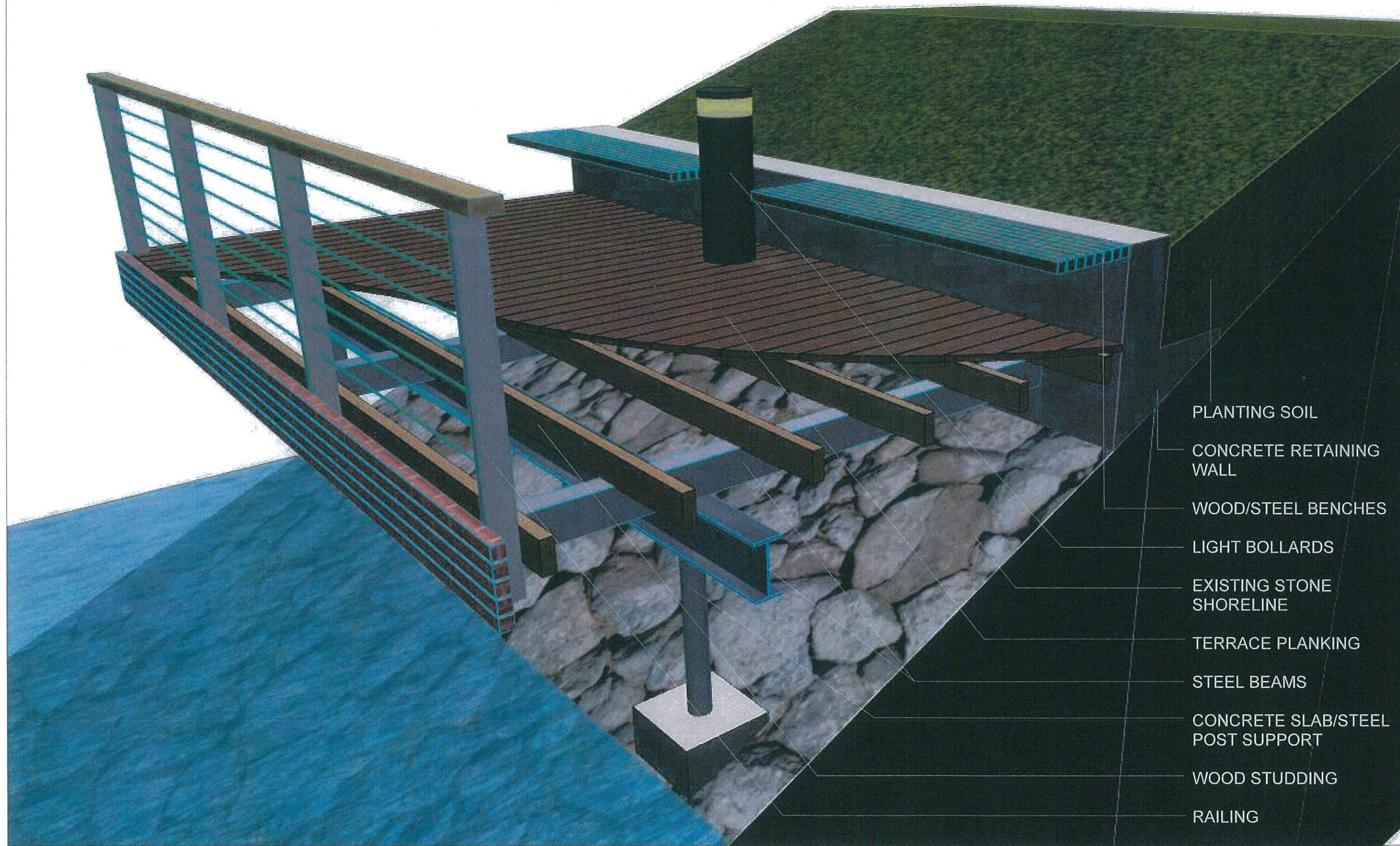
Stainless steel AISI316
frame and cladding.
Hardwood side
panelling. Rec pool
depth 1,8m, toddler pool
depth 0,5m.



3D VIEW OF MODULE



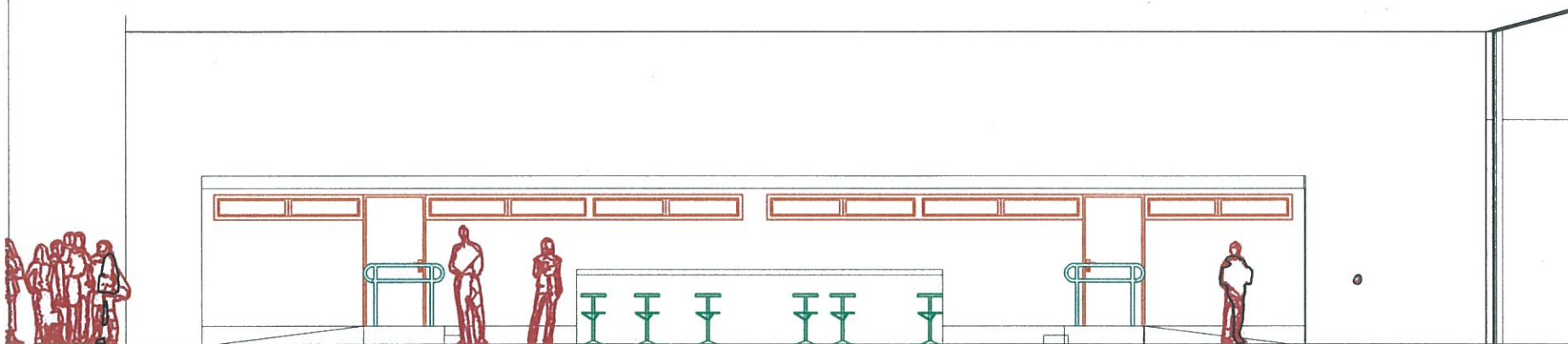
3D DETAIL OF MODULE



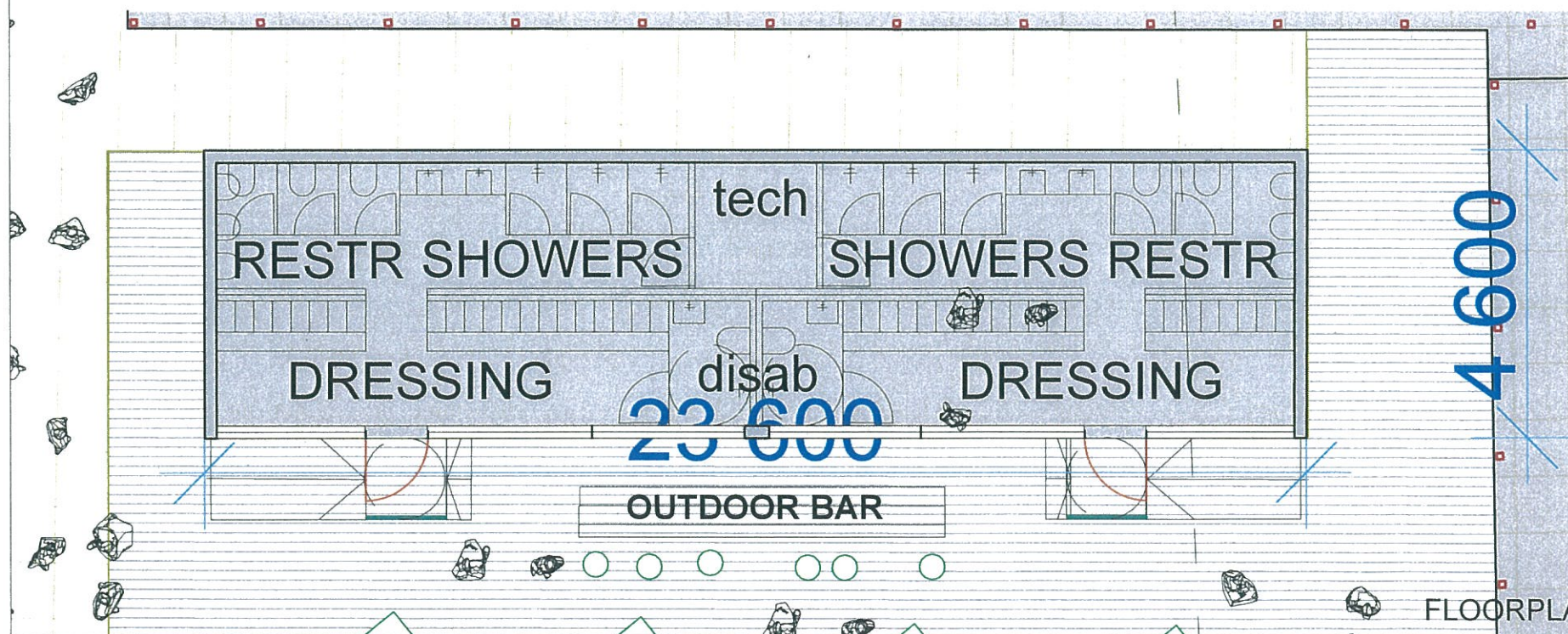
- PLANTING SOIL
- CONCRETE RETAINING WALL
- WOOD/STEEL BENCHES
- LIGHT BOLLARDS
- EXISTING STONE SHORELINE
- TERRACE PLANKING
- STEEL BEAMS
- CONCRETE SLAB/STEEL POST SUPPORT
- WOOD STUDDING
- RAILING



3D WIEW



FACADE 1:100



FLOORPLAN 1:100

Restroom/shower/dressing/bar

Marinetek buildings are prefabricated quality work, transported as modules and installed on-site.

Interior:

Toilets, sinks, taps etc are reputable brands.
 Shower and toilet interior walls are tiled.
 All floors tiled.
 Wc- and shower cubicles high pressure laminate.
 Steel/wood lockers and benches in dressing rooms.
 Doors normal flush interior doors.
 LED lightning.

Exterior:

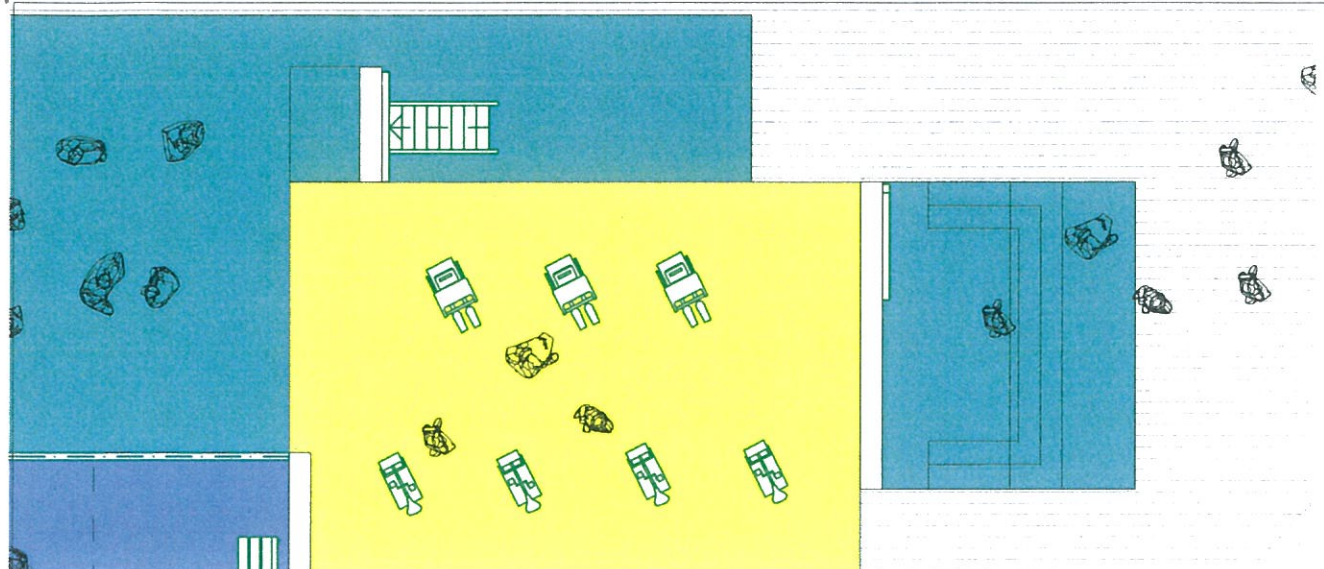
Facades il treated wood battening.
 Roof is Protan PVC roofing.
 Doors aluminum insulated doors.
 Windows openable aluminum frame, openable, 2-pane.
 Rainwater chutes in 4 corners.
 No foundations, sits on concrete beams.

Installations:

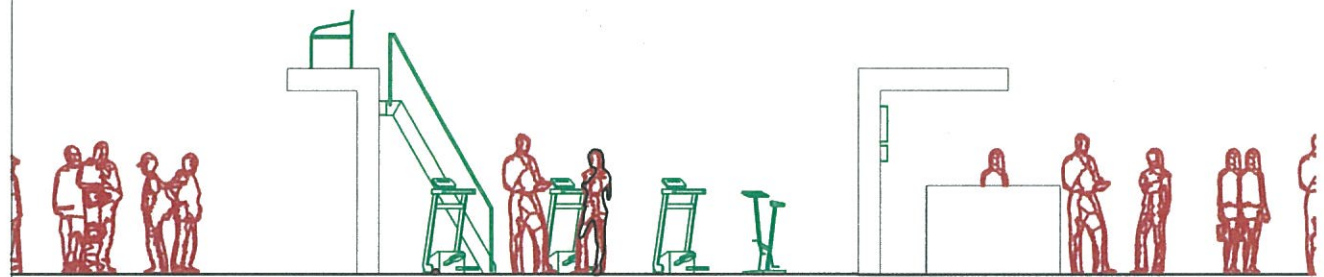
Water heaters.
 Air conditioning in all spaces, condensers on roof.

Bar:

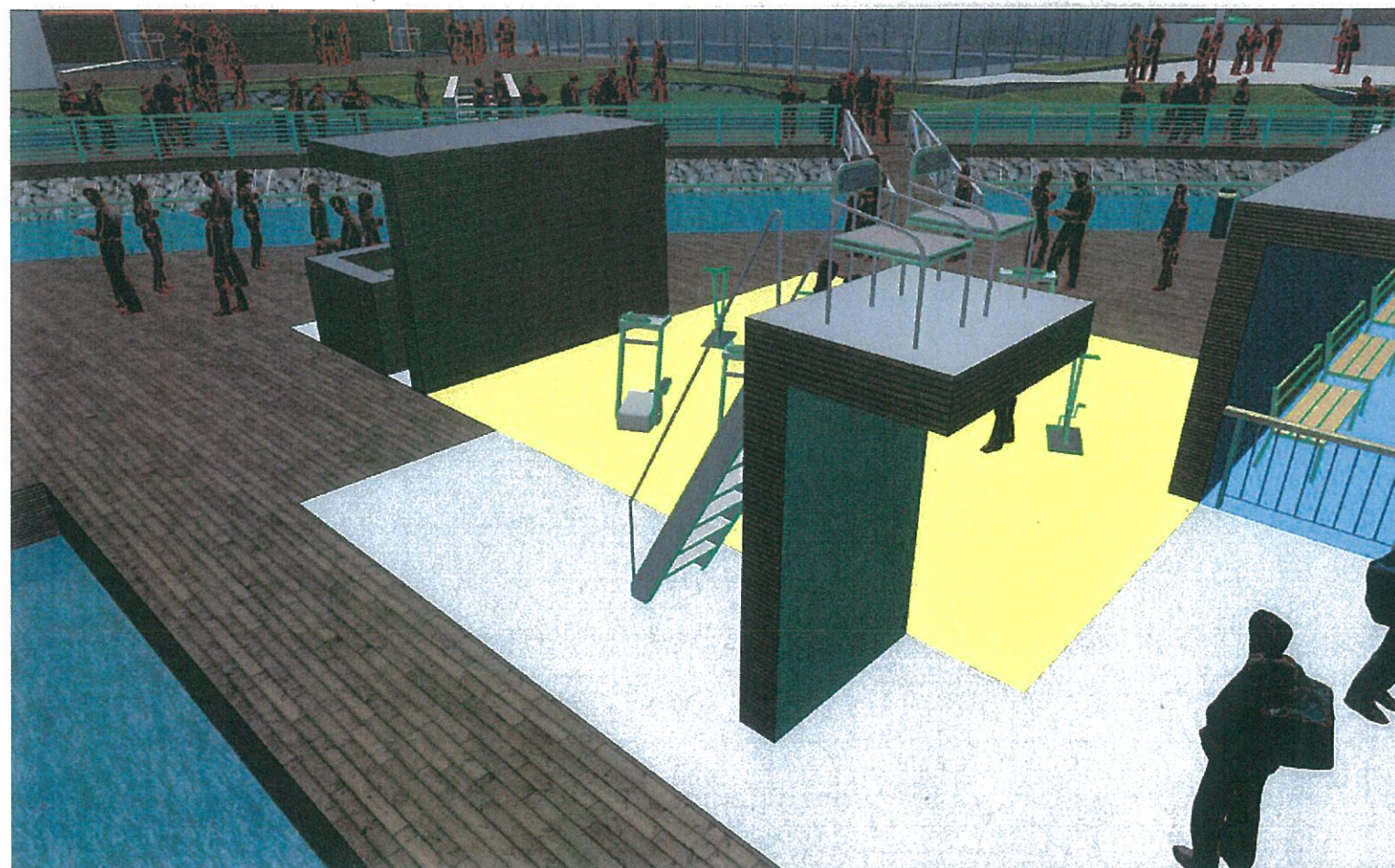
Fridges, sinks, taps stailless steel and reputable brands. Facades are facade oil treated wood battening. LED lightning . No foundations, sits on ground.



FLOORPLAN 1:100



FACADE 1:100

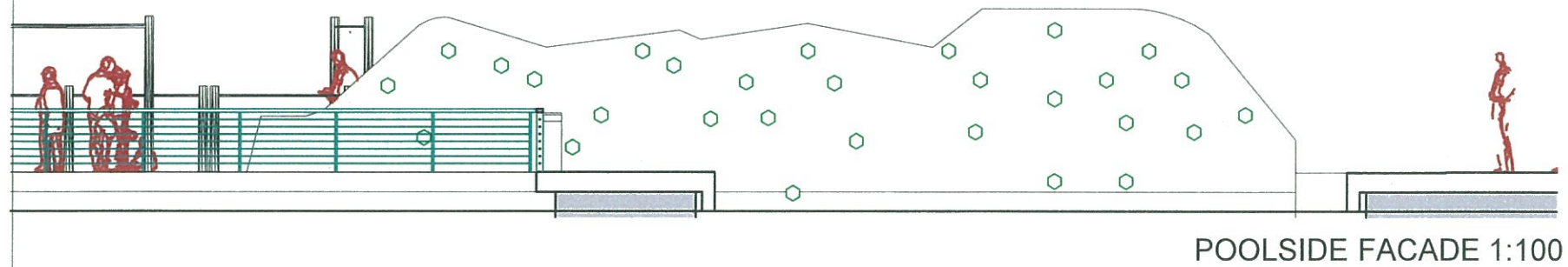


Lifeguard post

Marinetek Jump tower is prefabricated quality work, transported as modules and installed on-site. Steel/wood L-shape frame. Facades are facade oil treated wood battening. Inside wall and ceiling high pressure lamitate board in color. LED lightning . Bolted to pontoon platform steel frame. Stainless railings on top, stainless ladder with handrails. Decking on top.

First aid post

Marinetek First aid post is prefabricated quality work, transported as modules and installed on-site. Cabinets under the counter. Facades are facade oil treated wood battening. LED lightning .



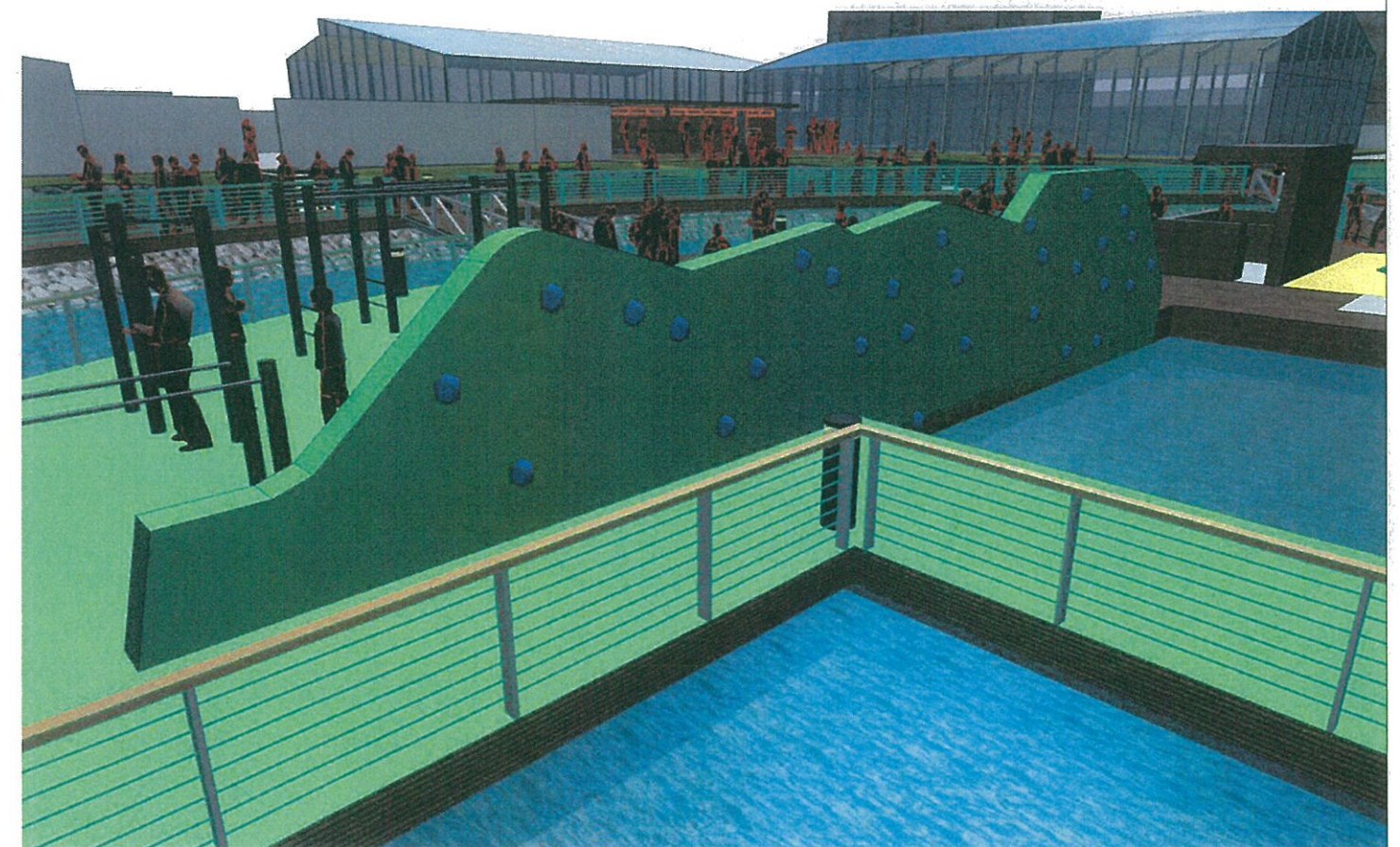
POOLSIDE FACADE 1:100

Rock of Gibraltar climbwall

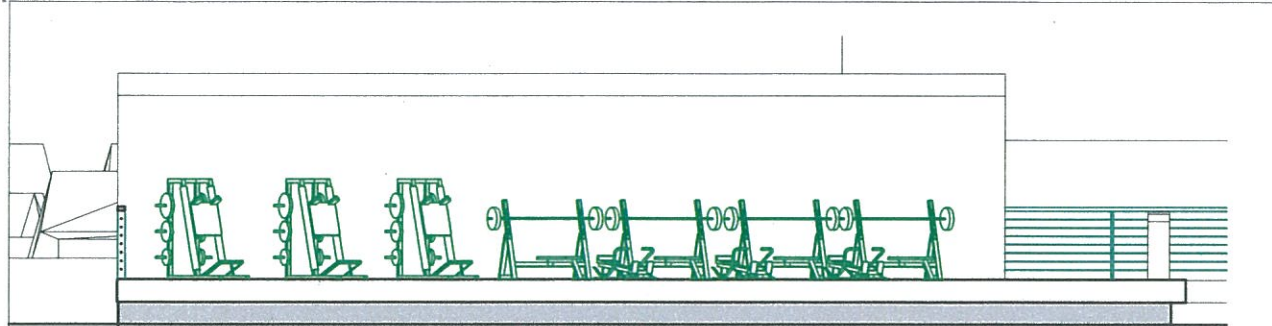
Climbwall can be climbed from the jump pool, recessed to pool about 600mm. Hot dip galvanized steel / wood structure. The surface is high pressure laminate on both sides, green RAL6018 color. Real climb grabs, three different colored routes. The silhouette shape of the wall is shape of Rock of Gibraltar.



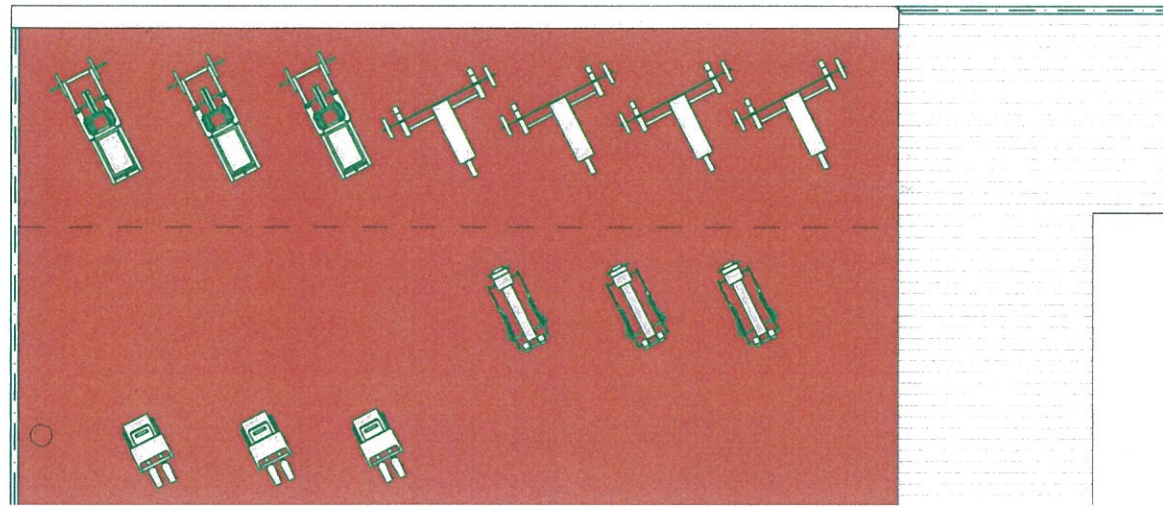
FRINTSIDE 3D WIEW



POOLSIDE 3D WIEW



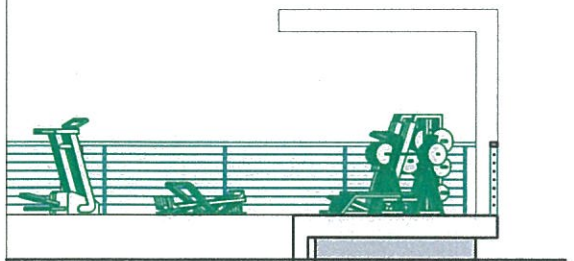
FACADE 1:100



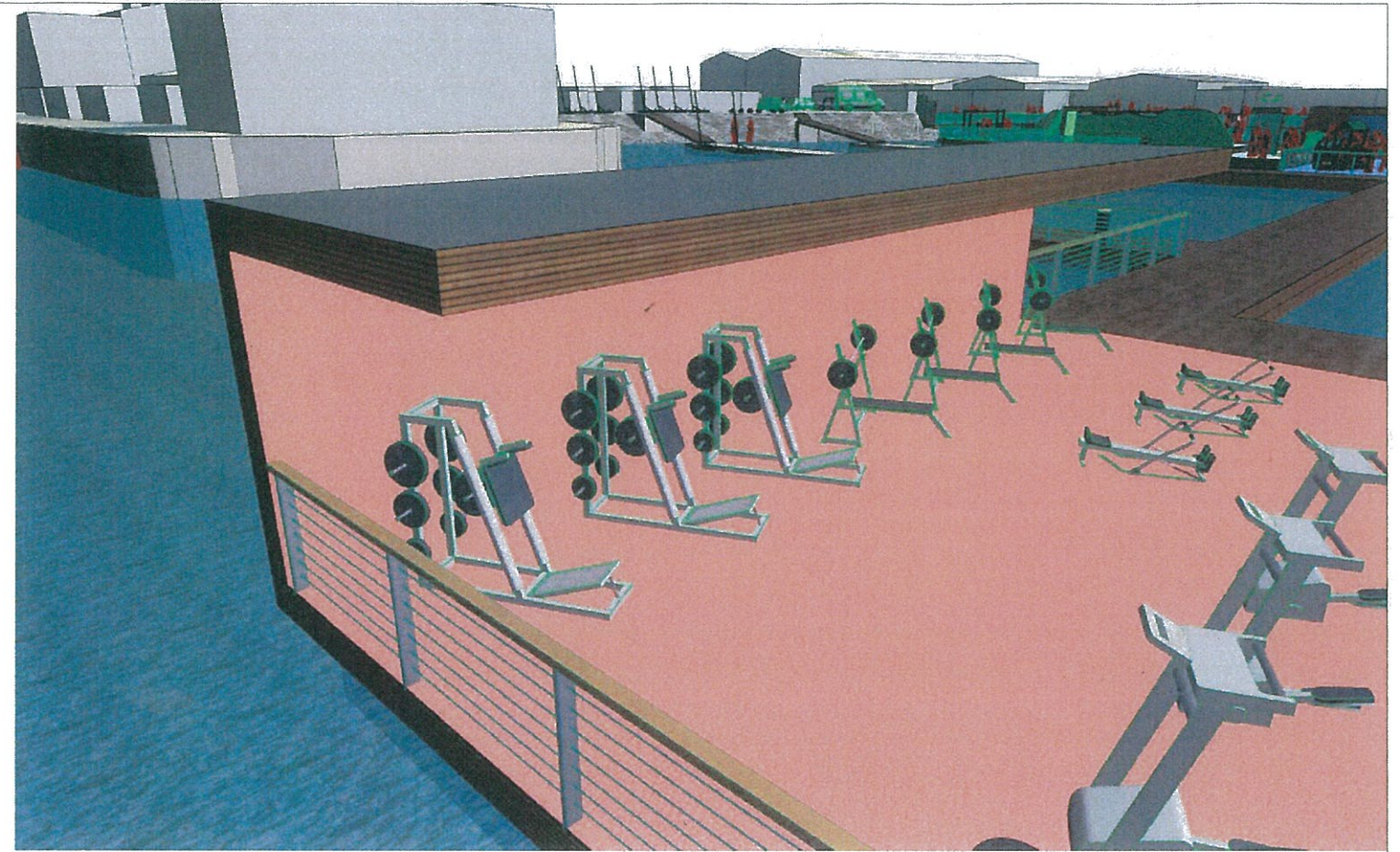
FLOORPLAN 1:100

Canopy 1

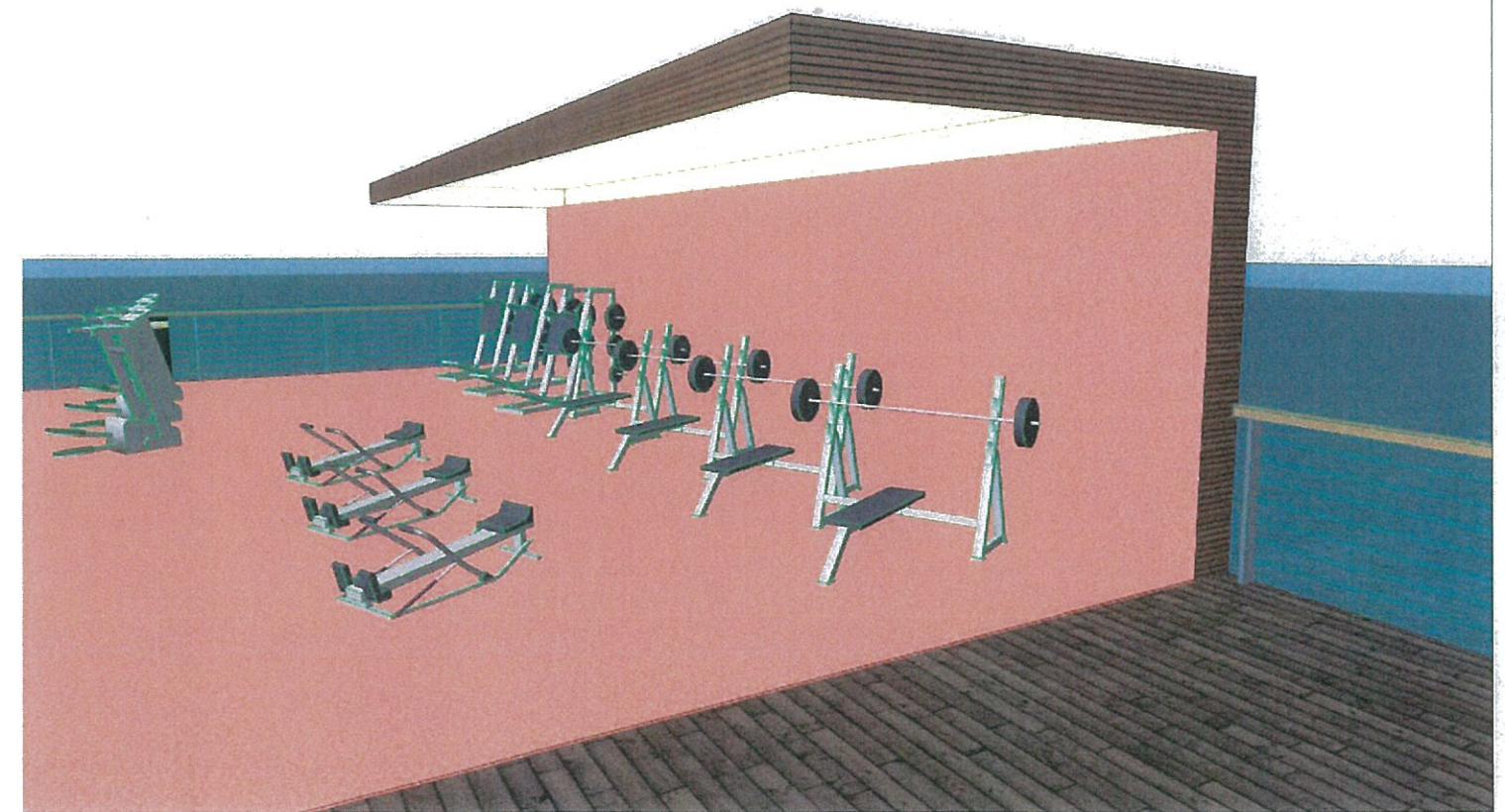
Marinetek canopy is prefabricated quality work, transported as modules and installed on-site. Steel/wood L-shape frame. Facades are facade oil treated wood battening. LED lightning . Inside wall and ceiling high pressure lamitate board in color. Bolted to pontoon platform steel frame.



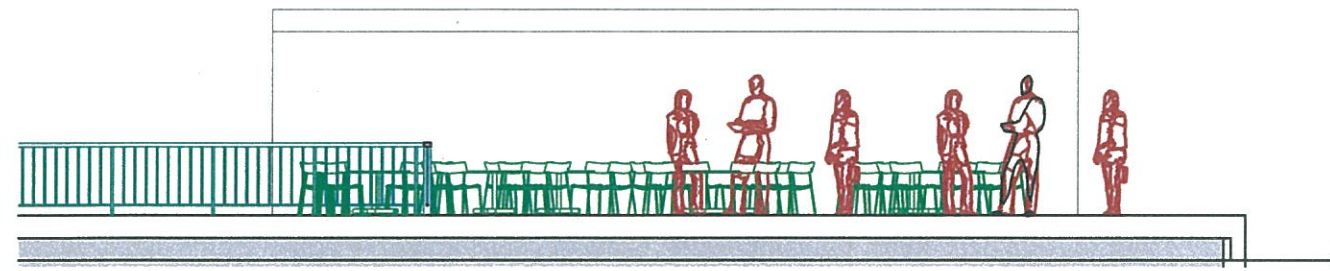
FACADE 1:100



3D WIEW



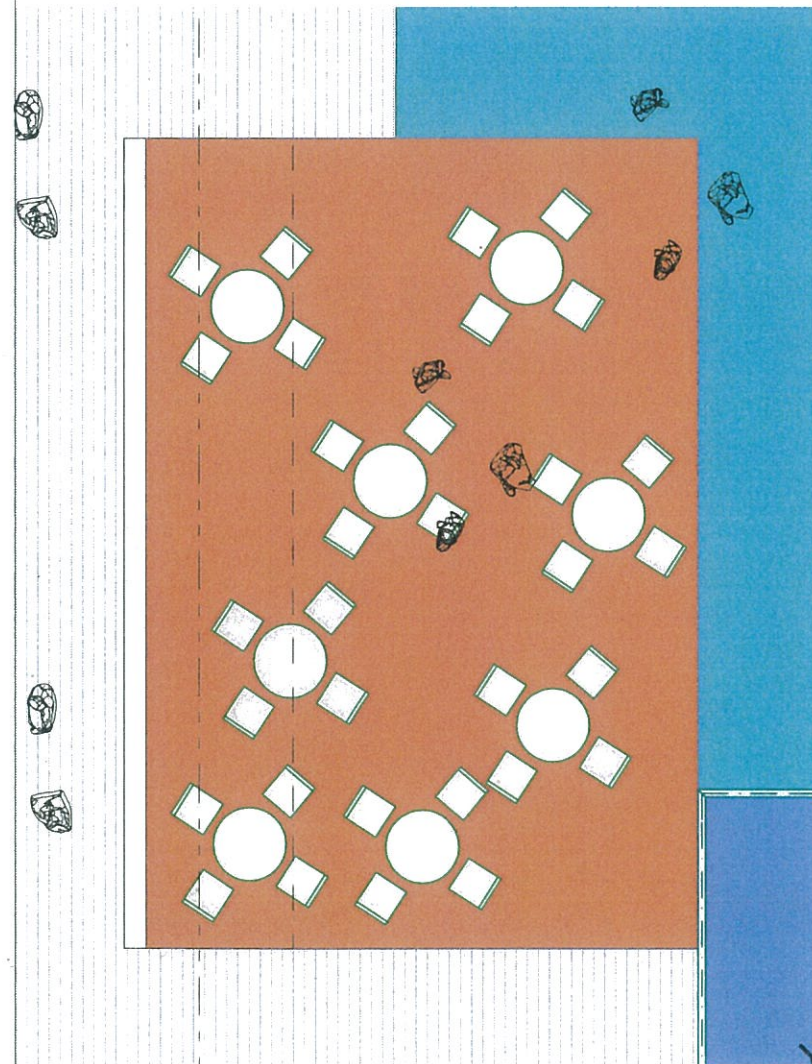
3D WIEW



FACADE 1:100



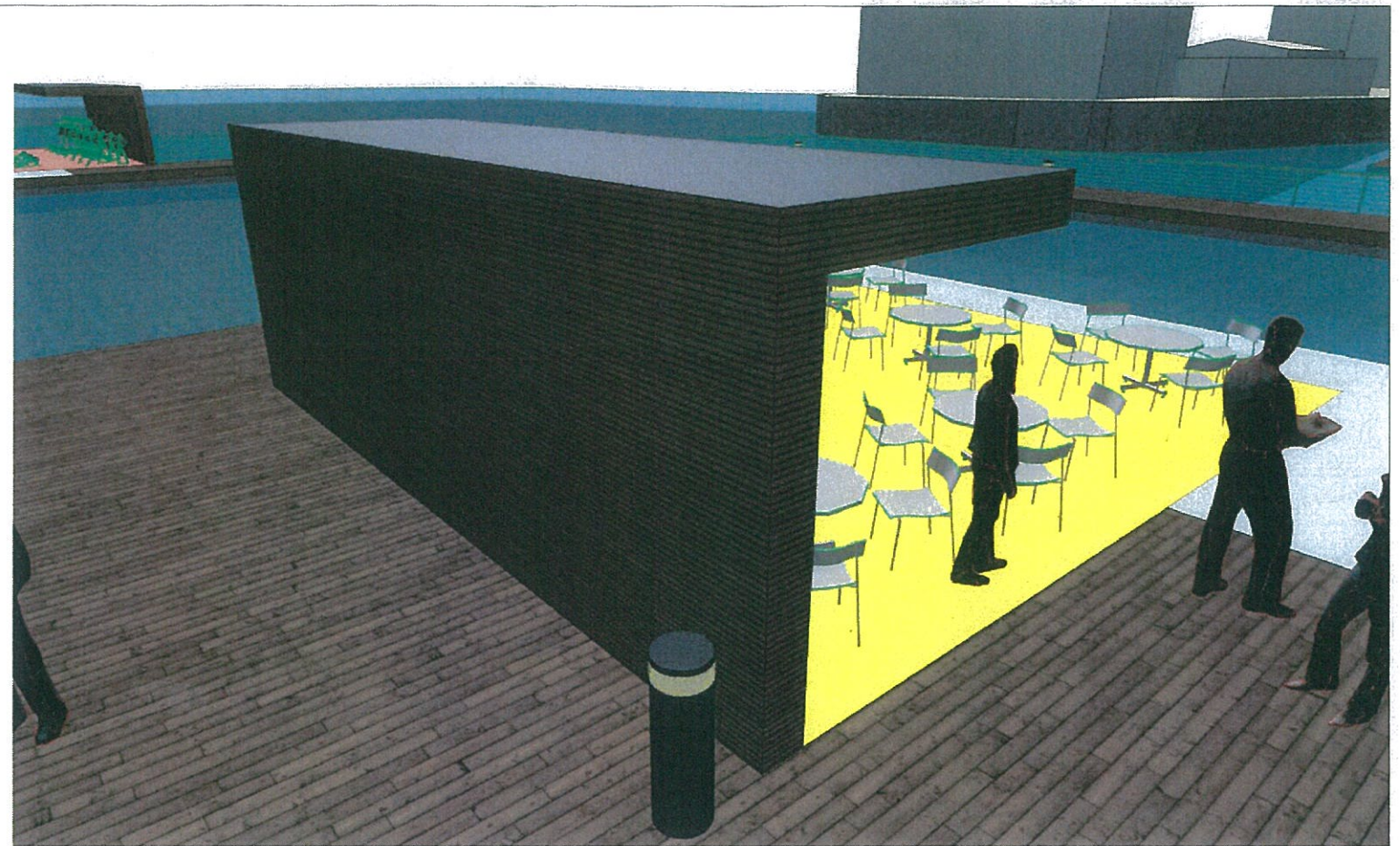
FACADE 1:100



FLOORPLAN 1:100

Canopy 2

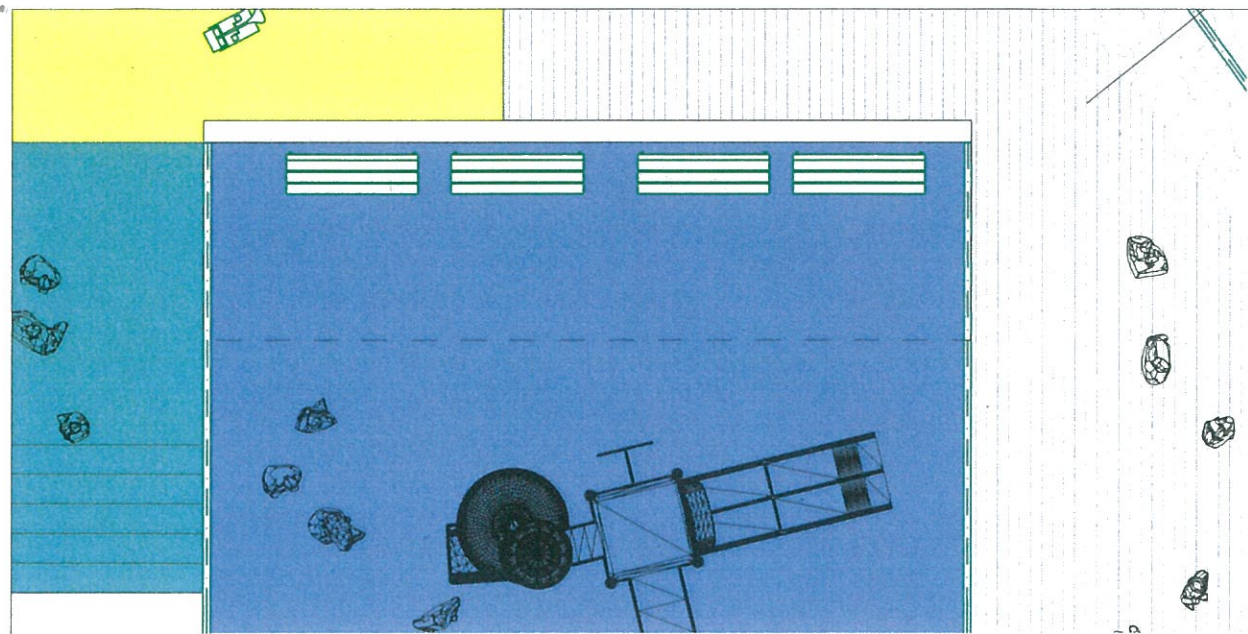
Marinetek canopy is prefabricated quality work, transported as modules and installed on-site. Steel/wood L-shape frame. Facades are facade oil treated wood battening. Inside wall and ceiling high pressure laminate board in color. LED lightning . Bolted to pontoon platform steel frame.



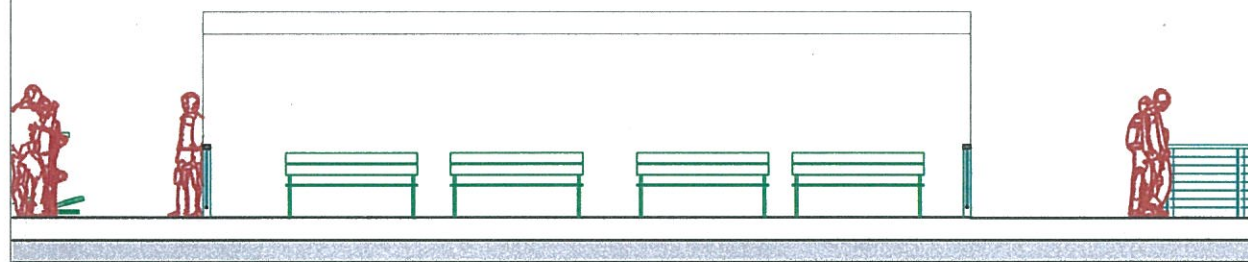
3D WIEW



3D WIEW



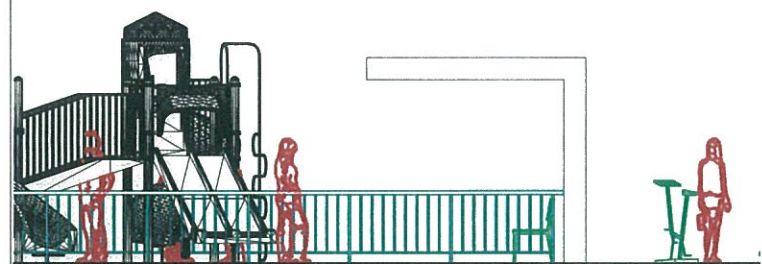
FLOORPLAN 1:100



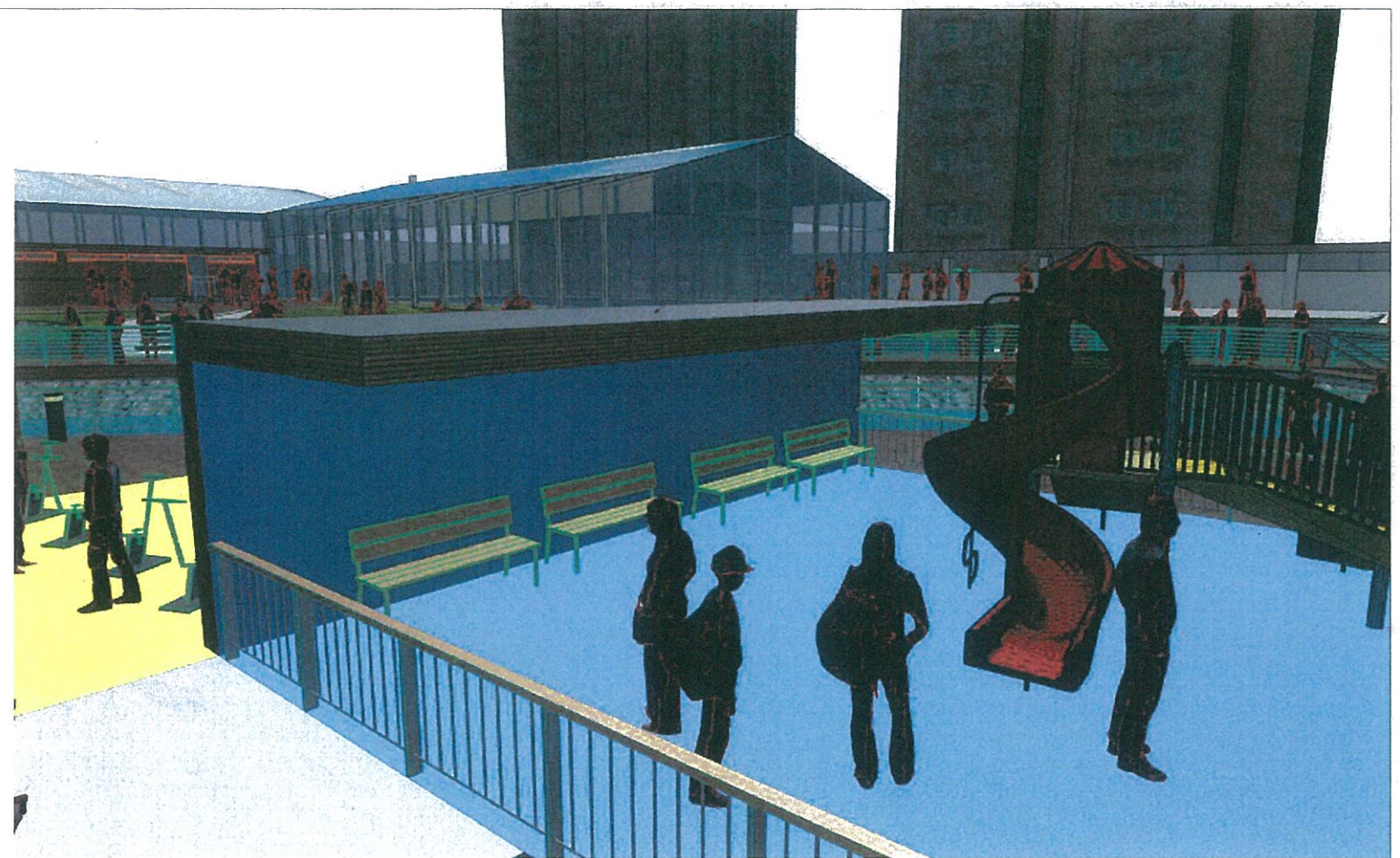
FACADE 1:100

Canopy 3

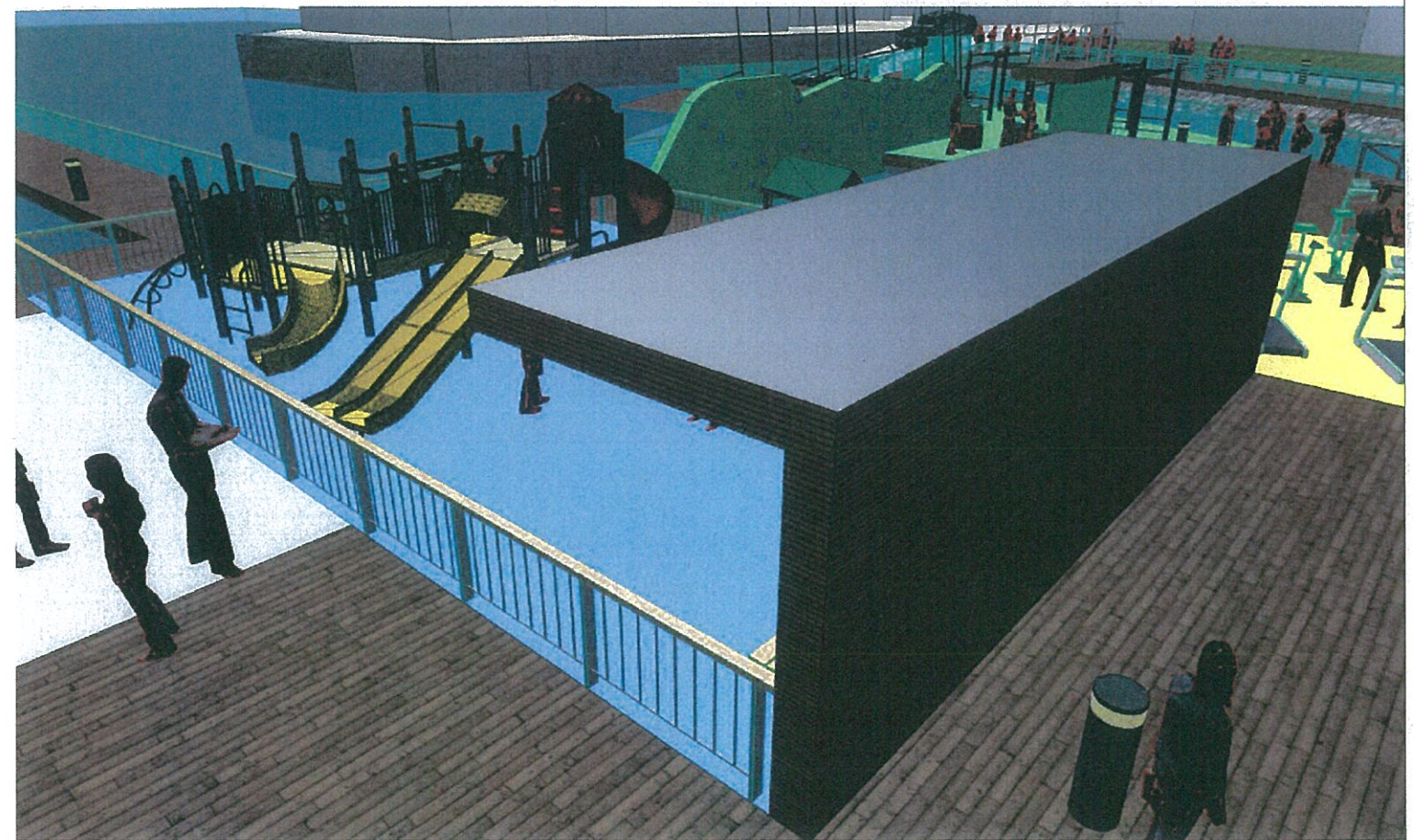
Marinetek canopy is prefabricated quality work, transported as modules and installed on-site. Steel/wood L-shape frame. Facades are facade oil treated wood battening. Inside wall and ceiling high pressure laminate board in color. LED lightning . Bolted to pontoon platform steel frame.



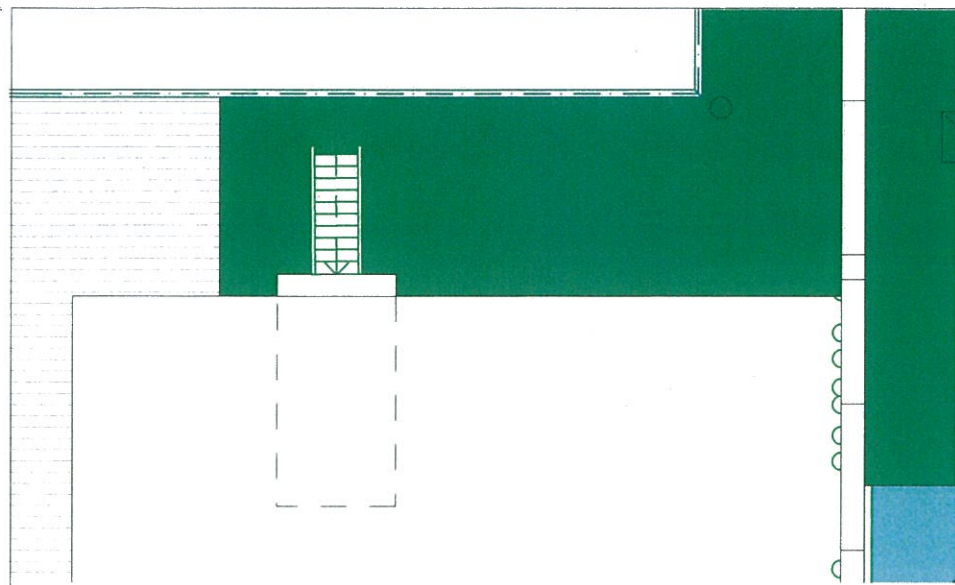
FACADE 1:100



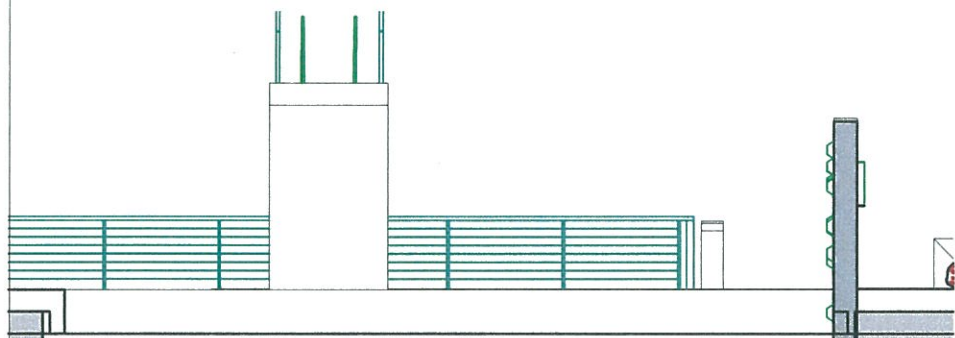
3D WIEW



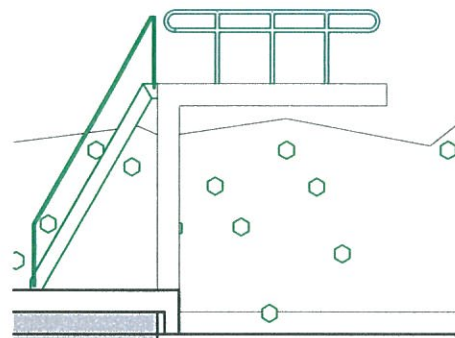
3D WIEW



FLOORPLAN 1:100



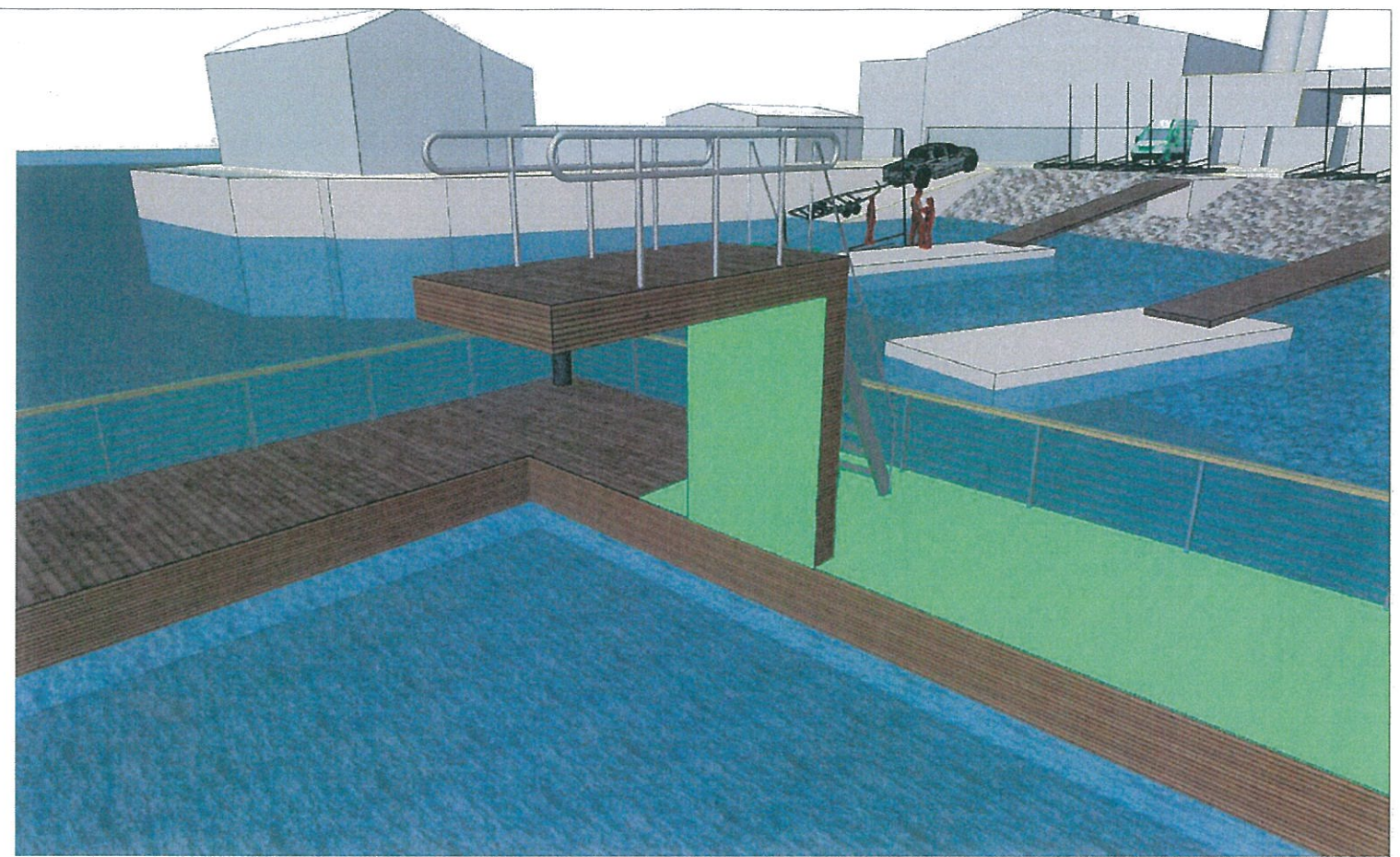
FACADE 1:100



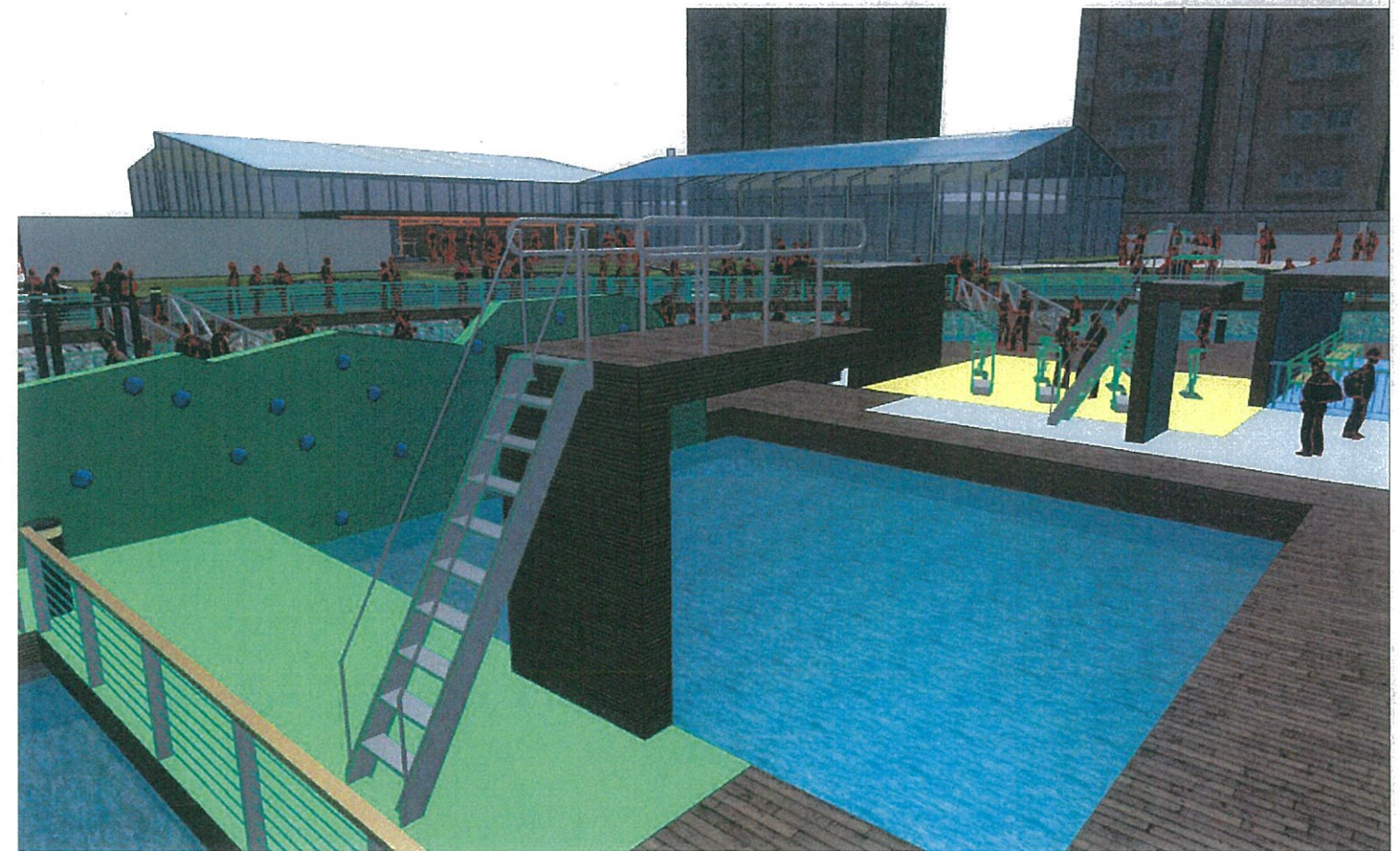
FACADE 1:100

Jump tower

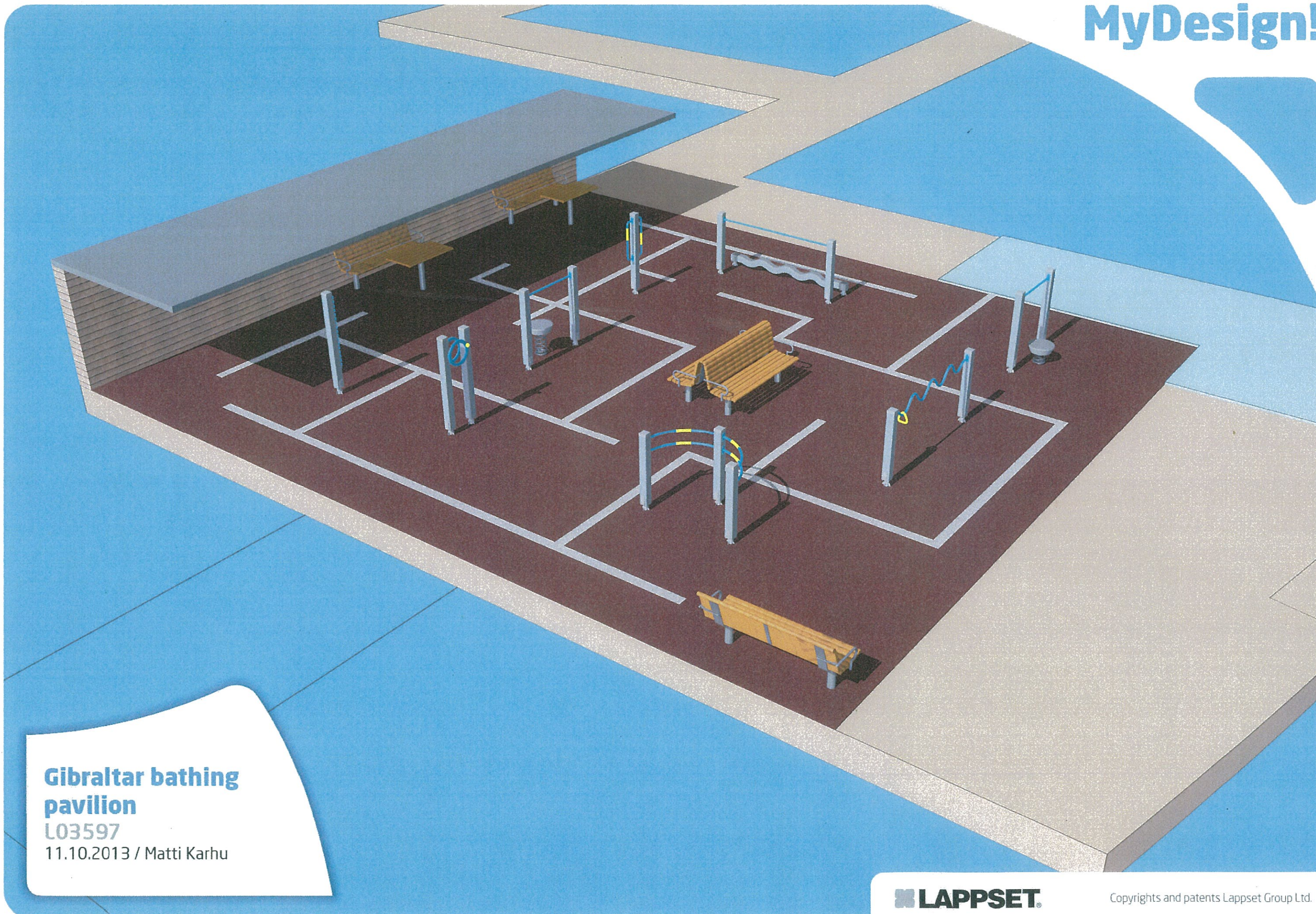
Marinetek Jump tower is prefabricated quality work, transported as modules and installed on-site. Steel/wood L-shape frame. Facades are facade oil treated wood battening. Inside wall and ceiling high pressure laminate board in color. LED lightning . Bolted to pontoon platform steel frame. Stainless railings on top, stainless ladder with handrails. Decking on top.



3D WIEW



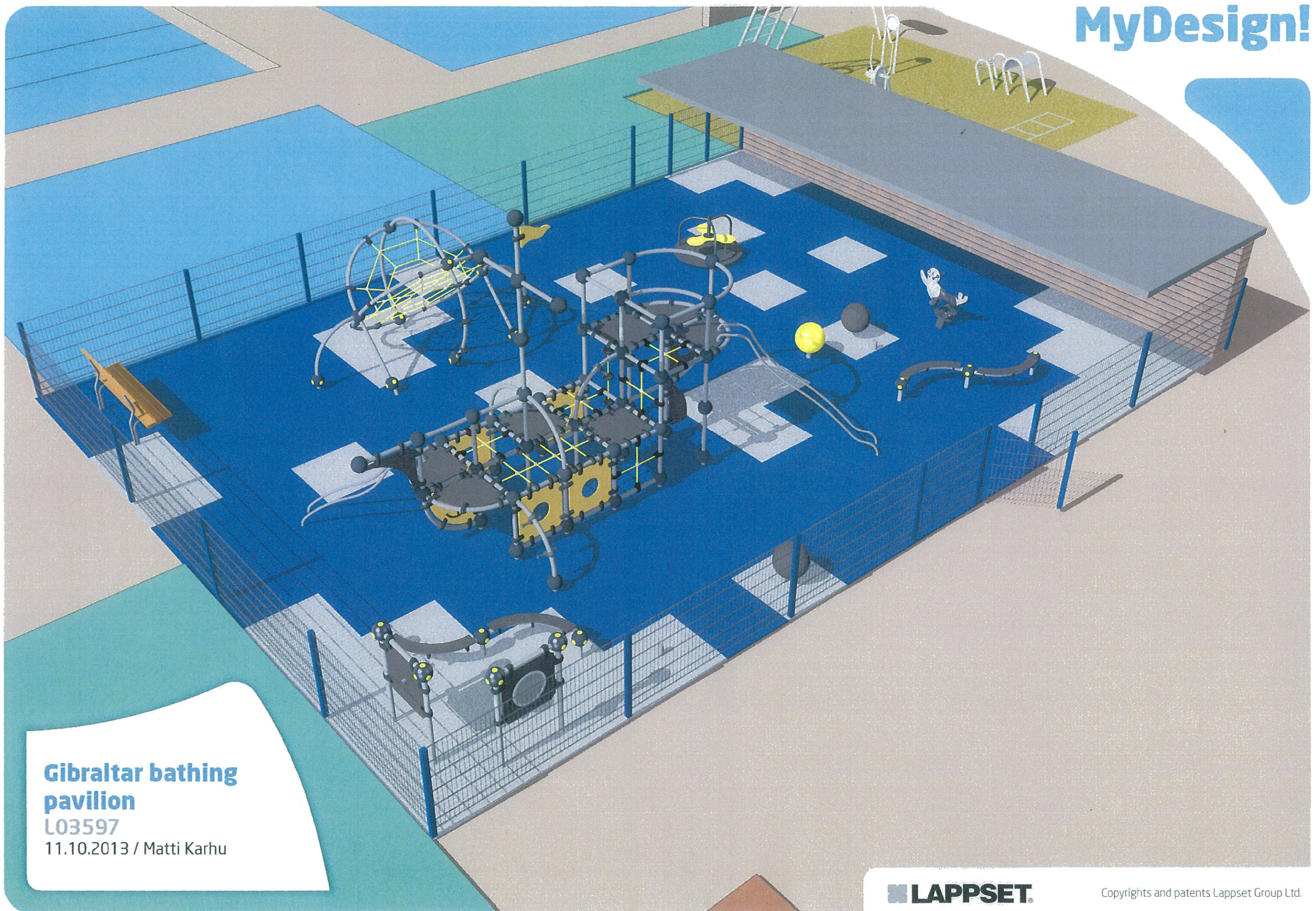
3D WIEW



Gibraltar bathing pavilion

L03597

11.10.2013 / Matti Karhu

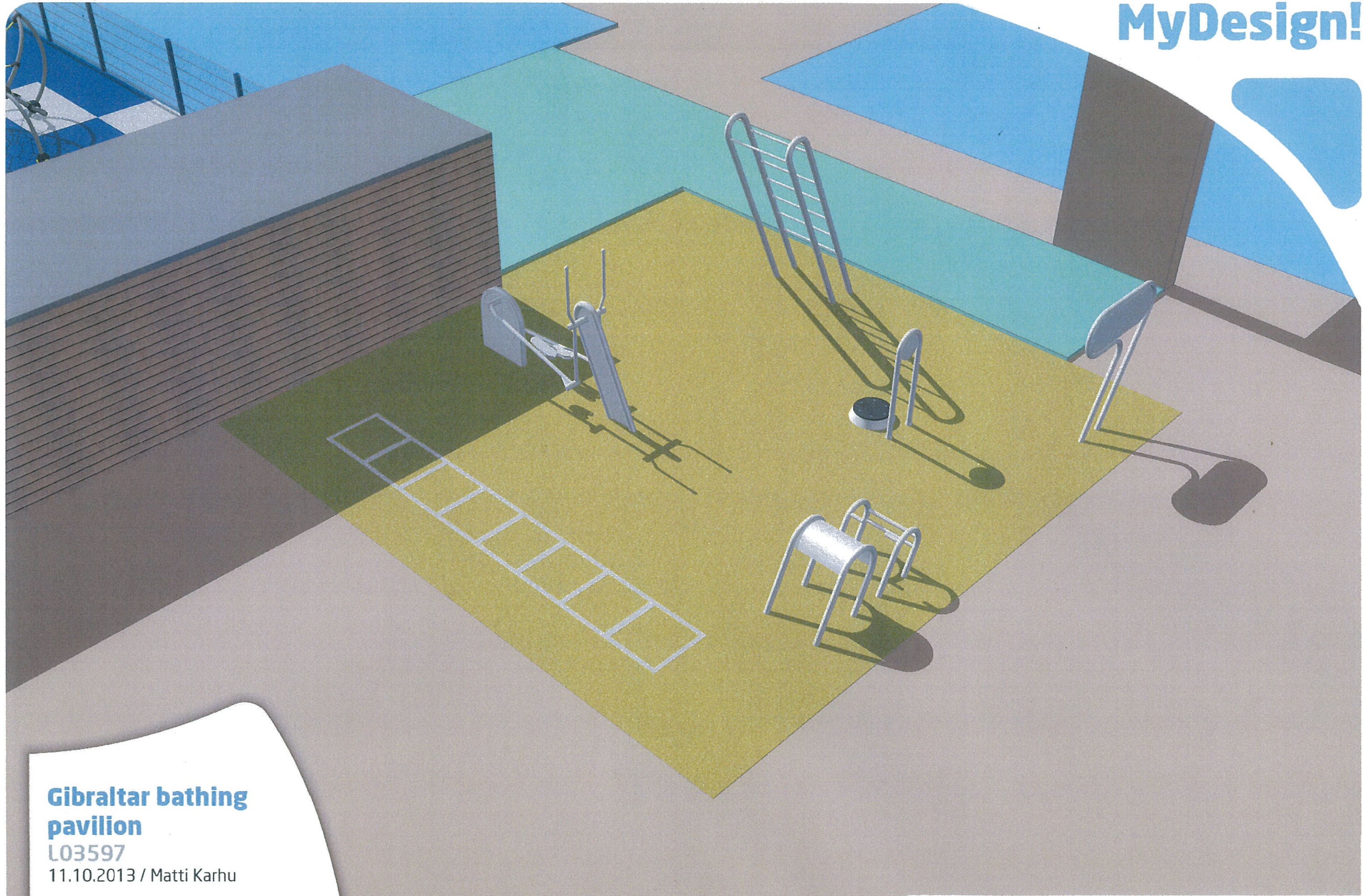


Gibraltar bathing pavilion

L03597

11.10.2013 / Matti Karhu

MyDesign!



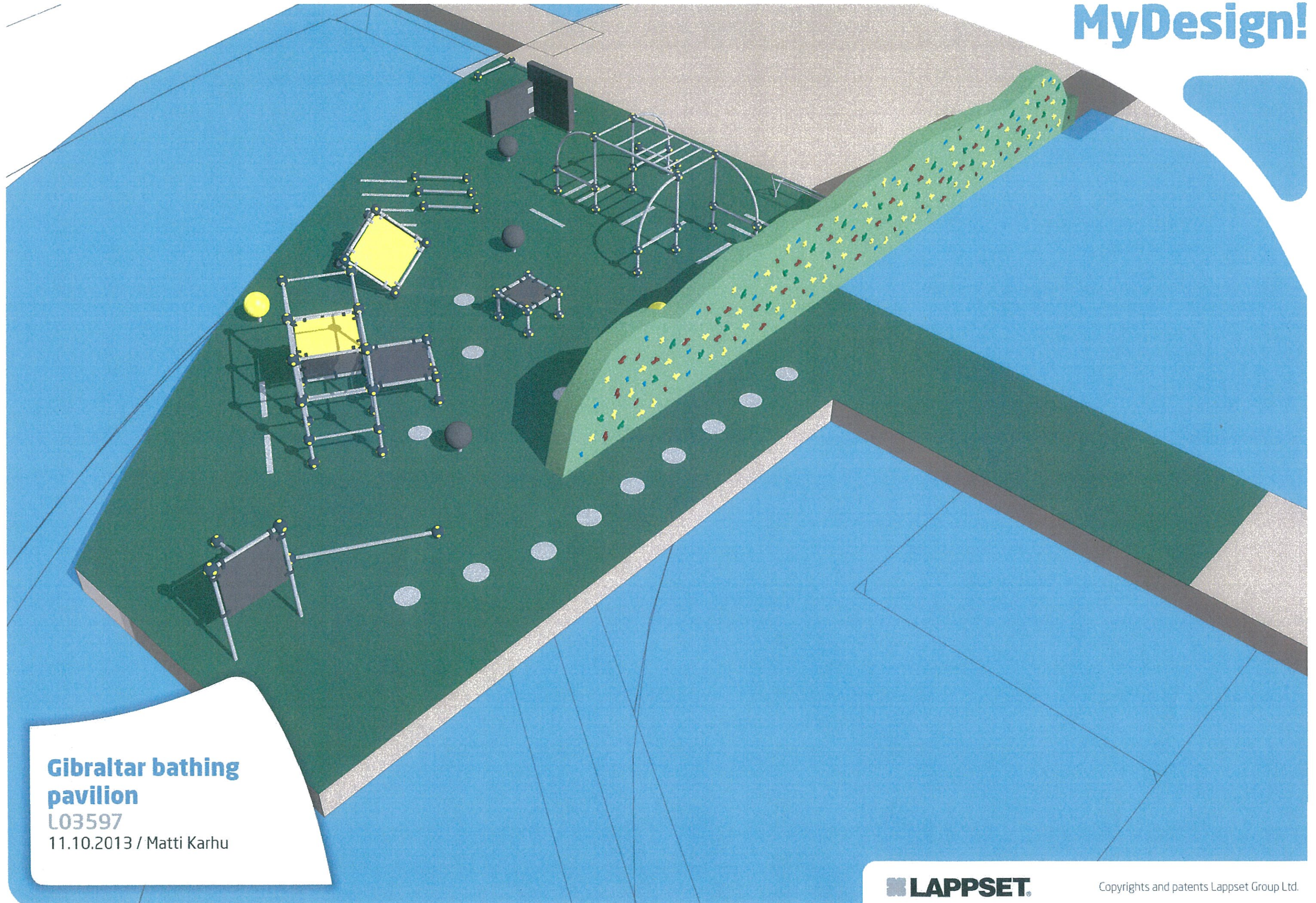
Gibraltar bathing pavilion

L03597

11.10.2013 / Matti Karhu

LAPPSET

Copyrights and patents Lappset Group Ltd.



Gibraltar bathing pavilion

L03597

11.10.2013 / Matti Karhu